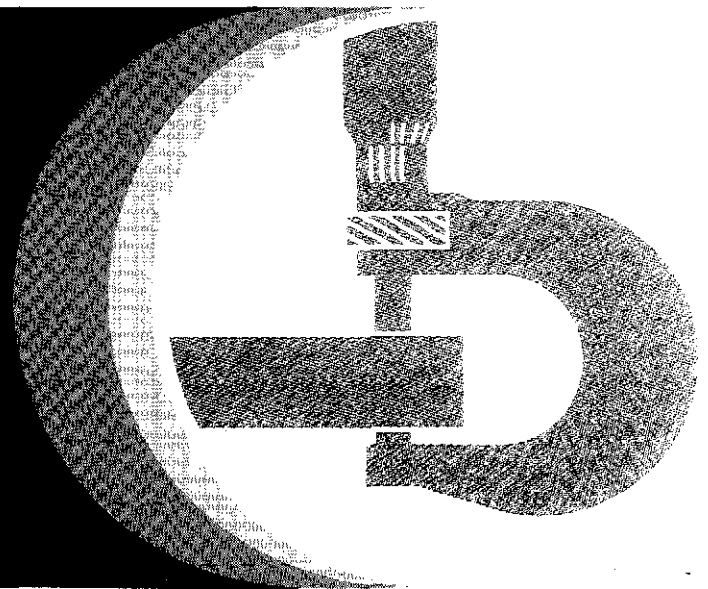


3640 Tractor



John Deere Werke Mannheim
John Deere Ibérica S.A. Getafe
TM-4419

Printed In Germany (English)



3640 TRACTOR TECHNICAL MANUAL TM-4419

SECTION CONTENTS IN GROUPS — REPAIR

10 - General

- 05 — Specifications
- 10 — Pre-delivery, delivery and after-sales inspections
- 15 - Lubrication and service
- 20 - Tune-up
- 25 — Tractor separation

20 - Engine

- 05 — Radiator

30 - Fuel and Air Intake System

- 05 — Fuel tank, auxiliary tank and water trap
- 10 — Cold weather starting aids
- 15 - Speed control linkage
- 20 — Air filter

40 - Electrical System

- 05 — Wiring harnesses
- 10 — Controls and instruments
- 15 — Lighting system
- 20 — Starting motor
- 25 — Alternator

50 - Power Train

- 05 — Clutch operating linkage
- 10 — Engine clutch
- 15 - Hi-Lo shift unit
- 20 — Transmission shift linkage
- 25 — Synchronized transmission and transmission oil pump
- 30 — Differential

- 35 — Final drives
- 40 — PTO
- 45 — Front PTO
- 50 — Front wheel drive u.j. drive shaft and disk clutch

60 - Steering System and Brakes

- 05 — Hydrostatic steering
- 10 - Hydraulic brakes
- 15 — Handbrake
- 20 — Hydraulic trailer brake

70 - Hydraulic System

- 05 — Valves
- 10 — Hydraulic pumps
- 15 — Rockshaft
- 20 — Front hitch
- 25 - Selective control valves (spool type)
- 30 - Quick couplers
- 35 - Remote cylinder

80 - Miscellaneous

- 05 — Front and rear wheels
- 10 — AXLA trailer hitch
- 15 — Trailer hitch (height adjustable)

90 - SG2 Cab

- 05 — Air conditioning system
- 10 — Cab ventilation and heating
- 15 — Operator's seat
- 20 — SG2 cab

© by Deere & Co., European Office,
TOO **Mannheim**

INHALT-LA701AE-020186

SECTION CONTENTS IN GROUPS — OPERATION AND TESTS

Z20 - ENGINE

- 05 — Radiator
- 10 — Tests

230 - FUEL AND AIR INTAKE SYSTEM

- 05 — Fuel tank, auxiliary tank and water trap
- 10 — Cold weather starting aids
- 15 — Speed control linkage
- 20 — Air filter

240 - ELECTRICAL SYSTEM

- 05 — Operation, diagnosing malfunctions, wiring diagrams
- 10 — Testing circuits and components
- 15 — Lighting system
- 20 — Starting motor
- 25 — Alternator

250 - POWER TRAIN

- 05 — Clutch operating linkage
- 10 — Engine clutch
- 15 — Hi-Lo shih unit
- 20 — Transmission shih linkage
- 25 — Synchronized transmission and transmission oil pump
- 30 — Differential
- 35 — Final drives
- 40 — Independent PTO
- 45 — Front PTO
- 50 — Front wheel drive u.j. drive shah and disk clutch

260 - STEERING SYSTEM AND BRAKES

- 05 — Hydrostatic steering
- 10 — Hydraulic brakes
- 15 — Handbrake
- 20 — Hydraulic trailer brake

270 - HYDRAULIC SYSTEM

- 05 — Operation and tests
- 10 — Hydraulic pumps
- 15 — Rockshaft
- 20 — Front hitch
- 25 — Selective control valves (spool type)
- 30 — Quick couplers
- 35 — Remote cylinder

290 - SG2 CAB

- 05 — Air conditioning system
- 10 — Cab ventilation and heating

Group 10

GENERAL

CONTENTS OF THIS SECTION IN GROUPS

05 - SPECIFICATIONS

Specifications	10-05-1
— Serial number plates.....	10-05-1
- Product identification number	10-05-1
- Engine serial number.....	10-05-1
- Transmission serial number.....	10-05-1
- Front wheel drive serial number.....	10-05-2
- Operator's cab serial number	10-05-2
- Model serial numbers	10-05-2
- Engine	10-05-3
- Engine clutch.....	10-05-4
- Cooling system	10-05-4
- Fuel system.....	10-05-4
- Electrical system.....	10-05-4
— yn hthntediyranmission	10-05-4
— Differential and final drives	10-05-5
- Differential lock	10-05-5
— PTO.....	10-05-5
- Front PTO	10-05-5
- PTO speeds.....	10-05-5
- Front wheel drive	10-05-6
- Hydrostatic steering	10-05-6
— Foot brakes.....	10-05-6
- Hand brake.....	10-05-6
- Hydraulic system	10-05-6
- Rockshaft	10-05-6
- Front hitch	10-05-6
- Ground travel speeds	10-05-6
- Front and rear wheels	10-05-7
- Dimensions and weights.....	10-05-7
- Capacities.....	10-05-7
- Standard torques for hardware.....	10-05-7

10 — PREDELIVERY, DELIVERY AND AFTER-SALES INSPECTIONS

Special tools	10-10-1
Specifications	10-10-2
Capacities.....	10-10-3
Torques for hardware	10-10-3
Predelivery inspection .. , .. , ..	10-10-4
Delivery inspection	10-10-20
After-sales inspection	10-10-21

1S - LUBRICATION AND SERVICE

Specifications	10-15-1
Capacities.....	10-15-1
Service intervals	10-15-1
Lubrication and service intervals ..	10-15-2
Capacities and service period	10-15-3
General.....	10-15-4
Engine oil.....	10-15-4
Transmission/hydraulic oil	10-15-5
Oil for mechanical front wheel drive	10-15-5
EP multi-purpose grease	10-15-6
Storing lubricants	10-15-6
Brake fluid for clutch operating system	10-15-6
Engines coolant	10-15-7
Checking engine oil level	10-15-7
Changing engine oil	10-15-8
Changing engine oil filter	10-15-8
Checking fuel filter	10-15-9
Replacing fuel filter.....	10-15-9
Replacing coolant.....	10-15-10
Checking trans mission/hydraulic	10-15-11
Changing transmission/hydraulic oil	10-15-12
Replacing transmission/hydraulic oil filter element.....	10-15-13

CONTENTS OF THIS SECTION IN GROUPS

15 — LUBRICATION AND SERVICE (Contd.)

Cleaning hydraulic pump filter strainer	10-15-13
Replacing brake fluid for clutch operating system.....	10-15-13
Checking axle housing oil level	10-15-14
Checking oil level in wheel hub housings	10-15-14
Changing axle housing oil	10-15-14
Changing wheel hub housing oil	10-15-14
Cleaning lubricating points	10-15-15
Lubricating universal-jointed drive shaft	10-15-15
Lubricating front wheel drive axle ..	10-15-16
Lubricating three-point hitch.....	10-15-16
Lubricating rear axle bearings.....	10-15-16
Lubricating front hitch	10-15-16

20 - TUNE-UP

Specifications	10-20-1
Preliminary engine testing	10-20-2
Checking air cleaner element.....	10-20-2
Checking air intake system connections for leaks	10-20-3
Checking crankcase vent tube for cleaning radiator side panels and grille screens	10-20-3
Cleaning radiator and oil cooler	10-20-4
Cleaning condenser	10-20-4
Checking radiator cap	10-20-4
Checking radiator for leaks	10-20-4
Checking thermostats	10-20-5
Checking fuel transfer pump	10-20-5
Checking fuel filter	10-20-5
Checking fuel tank	10-20-6
Checking auxiliary fuel tank.....	10-20-6
Checking water trap	10-20-6
Checking fuel injection pump idle speeds.....	10-20-7
Checking speed control linkage adjustment.....	10-20-7
Checking batteries	10-20-7
Checking fan belt tension.....	10-20-8
Checking compressor belt tension	10-20-8

Checking lighting system	10-20-8
Checking operation of start safety switch	10-20-8
Checking operation of starting motor	10-20-9
Final engine check.....	10-20-9
Checking tractor operation.....	10-20-9

25 - TRACTOR SEPARATION

Special tools	10-25-1
Torques for hardware	10-25-5
Capacities	10-25-7
Standard torques for hardware	10-25-7
Important notes.....	10-25-9
Removing tractor front end	10-25-10
Installing tractor front end	10-25-17
Separating between engine and clutch housing.....	10-25-20
Joining tractor between engine and clutch housing.....	10-25-29
Removing engine.....	10-25-32
Reassembling clutch housing	10-25-33
Installing clutch housing	10-25-35
Removing transmission	10-25-36
Installing transmission	10-25-42
Removing final drives	10-25-46
Installing final drives	10-25-54
Removing rockshaft.....	10-25-57
Installing rockshaft.....	10-25-59
Removing front wheel drive axle.....	10-25-61
Installing front wheel drive axle.....	10-25-63
Removing SG2 cab	10-25-66
Installing SG2 cab	10-25-76
Removing front hitch	10-25-79
Installing front hitch.....	10-25-82
Removing front PTO.....	10-25-84
Installing front PTO.....	10-25-86

SPECIFICATIONS

SERIAL NUMBER PLATES

The following illustrations show the serial number plates for tractor major components. The letters and figures on these plates are required for warranty claims and when ordering replacement parts.

TECHDA-LA71005AE-180385

PRODUCT IDENTIFICATION NUMBER

The product identification number plate is located on right-hand side of front axle carrier. The chassis number is stamped in front axle carrier next to the number plate.

NOTE: When ordering tractor parts (excluding engine parts), quote all letters and figures of serial number stamped on this plate.



... 1 1 * 111111 * " 1 *



ENGINE SERIAL NUMBER

The engine serial number plate is located on right-hand side of engine block.

NOTE: When ordering engine parts, quote all figures on this plate.



L107397-LA71005AE-180385

TRANSMISSION SERIAL NUMBER

The transmission serial number plate is located on right-hand crossmember of cab and on right-side of transmission case.

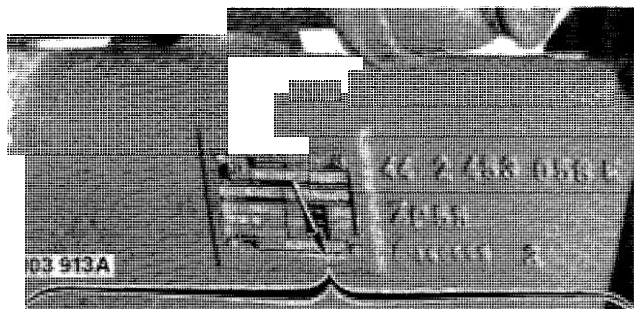
NOTE: In addition to serial number of transmission end transmission type, this serial number plate also specifies differential and front wheel drive gear ratios.



L110311-LA71005AE-040485

FRONT WHEEL DRIVE AXLE SERIAL NUMBER

The front wheel drive axle serial number plate is located on rear of right-hand axle half.



L103913A-LA71005AE-180385

OPERATORS CAB SERIAL NUMBER

For to S oy e s ea ber plate .t.,.
W/vhs ble f ebds as o 'enabr t ab

L103914A

L103914A-LA71005AE-180385

MODEL SERIAL NUMBERS

Fuel injection pump, fuel injection nozzles, alternator, starting motor, hydrostatic steering valve, air conditioning system compressor (when equipped) and hydraulic pump have serial numbers to facilitate identification of different makes of a given unit.

TECHDA-LA71005BE-180385

Specifications

ENGINE

Number of cylinders	6
Cylinder liner bore . .	106.5 mm (4.19 in.)
Stroke	110 mm (4.33 in.)
Displacement	5883 cm* (359 cu.in.)
Compression ratio	17.4 : 1
Max. torque at 1400 rpm . .	390 Nm (285 ft-lb)
Firing order	1-5-3-6-2—4
Valve clearance (engine hot or cold)	
– Intake valve	0.35 mm (0.014 in.)
– Exhaust valve	0.45 mm (0.018 in.)
Slow idle speed	700 to 800 rpm
Fast idle speed	2510 to 2610 rpm
Rated engine speed	2400 rpm
Working speed range	1400 to 2400 rpm
Engine speed for PTO operation .. .	2175 rpm
Flywheel horsepower at engine rated speed of 2400 rpm	
– According to DIN 70 020	82 kW (112 hp)
PTO" horsepower at engine rated speed of 2400 rpm	
– According to DIN 70020; 50 MOE . .	74 kW (100 hp)
– According to SAE J 816 b; 80 MOE . . .	71 kW (95 hp)
PTO" horsepower at engine speed of 2175 rpm	
– According to DIN 70020	72 kW (98 hp)
Lubrication system	Full internal force feed system with full flow filter

" With the engine run in (above 100 hours of operation) and at operating temperature (engine and transmission), measured by means of a dynamometer
Permissible variation * 50/o

TECHDA-LA71005CE-180385

ENGINE CLUTCH

– Type Single dry disk clutch with torsion damper, foot-operated

COOLING SYSTEM

– Type Pressurized system with centrifugal pump
– Temperature regulation Two thermostats

FUEL SYSTEM

– Type Direct injection
– Fuel injection pump timing to engine TDC
– Fuel injection pump type Distributor type with two pistons
Stanadyne no. DB2 4378
– Air cleaner Dry-type air cleaner with secondary (safety) element

ELECTRICAL SYSTEM

– Batteries 2 x 12 volt, 88 Ah
– Alternator with internal regulator 14 volt, 55 amps.
– Starting motor 12 volt, 3 kW (4 hp)
– Battery terminal grounded . .. negative

SYNCHRONIZED TRANSMISSION

– Type Synchronized transmission
– Gear selections . 8 forward and 4 reverse
– Gear shifting Two forward groups and one reverse group;
Synchronized forward and reverse shifting within groups

HI-LO SHIFT UNIT

– Type Hydraulic gear reduction unit which can be shifted under load with “wet” multiple disk clutch and brake packs.
– Travel speed decreases in each gear by approx. 20 %
– Shifting to reduced (Lo) speed hydraulic
– Shifting to normal (Hi) speed . preloaded cup springs

Specifications

DIFFERENTIAL AND FINAL DRIVES

- Type of differential spiral bevel gears
- Type of final drive planetary reduction drive

DIFFERENTIAL LOCK

- Operation hand or foot operated
- Disengaged automatically as soon as traction has equalized

PTO

- Type independent of transmission, can be engaged and disengaged under *load*
- PTO speeds at engine speed of 2175 rpm 540/1000 rpm, shiftable
- PTO clutch hydraulically operated "wet" disk clutch
- PTO brake hydraulically operated "wet" disk brake

FRONT PTO

- Type independent of transmission, can be engaged and disengaged under load
- Control electrical/hydraulic solenoid switch
- PTO speed at an engine speed of 2175 rpm 1000 rpm
- PTO clutch hydraulically operated "wet" disk clutch
- PTO brake hydraulically operated "wet" disk brake

PTO SPEEDS

	540 rpm shaft	1000 rpm shaft
at engine speed		368 rpm
		1000 rpm
— 800 rpm . .	198 rpm	1104 rpm
- 2175 rpm .	540 rpm	1149 rpm
— 2400 rpm	595 rpm	1200 rpm
— 2500 rpm	620 rpm	
— 2610rpm	648 rpm	

TECHOA-LA74 008E H-4 80385

Tractors — JDWM

FRONT WHEEL DRIVE

- Type engaged hydraulically under load with "wet" disk clutch
- Control electrical/hydraulic solenoid switch
- Drive engagement preloaded cup springs
- Drive disengagement hydraulic

HYDROSTATIC STEERING

- Type ... without mechanical linkage between steering valve and front wheels

FOOT BRAKES

- Rear brake ... self-adjusting, hydraulically operated "wet" disk brakes
- Propeller shaft brake ... self-adjusting, hydraulically operated disk brake

HANDBRAKE

- Type ... mechanically operated band-type locking brake acting on the differential

HYDRAULIC SYSTEM

- Type closed, constant pressure system
- System pressure when pump pistons idle ... 19000 kPa (190 bar; 2760 psi)
- Operating pressure 17000 kPa (170 bar; 2470 psi)
- Hydraulic pump 8-piston pump with variable displacement

ROCKSHAFT

- Type with quick coupling (hook-type) draft links
- Regulation load control, load-and-depth control, float position
- Control via draft links

FRONT HITCH .

controlled by selective control valve

GROUND TRAVEL SPEEDS

see Operator's Manual

John Deere 3640

Tractor Technical

Manual

Then Instant Download

the Complete Manual

Thank you very much!