

SERVICE REPAIR MANUAL



JOHN DEERE
655B, 755B

655B and 755B Crawler Loader Repair

For complete service information also see:

655B and 755B Crawler Loader

Operation and Test TM1333
6068 Engine CTM8
6414 Engine CTM4
Starting Motor and Actuator CTM77
Undercarriage Appraisal Manual SP326

John Deere Dubuque Works
TM1478 (11MAY94)

LITHO IN U.S.A.
ENGLISH

Introduction

FOREWORD

This manual is written for an experienced technician. Essential tools required in performing certain service work are identified in this manual and are recommended for use.

Live with safety: Read the safety messages in the introduction of this manual and the cautions presented throughout the text of the manual.

N This is the safety-alert symbol. When you see this symbol on the machine or in this manual, be alert to the potential for personal injury.

Technical manuals are divided in two parts: repair and operation and tests. Repair sections tell how to repair the components. Operation and tests sections help you identify the majority of routine failures quickly.

Information is organized in groups for the various components requiring service instruction. At the beginning of each group are summary listings of all applicable essential tools, service equipment and tools, other materials needed to do the job, service parts kits, specifications, wear tolerances, and torque values.

Technical Manuals are concise guides for specific machines. They are on-the-job guides containing only the vital information needed for diagnosis, analysis, testing, and repair.

Fundamental service information is available from other sources covering basic theory of operation, fundamentals of troubleshooting, general maintenance, and basic type of failures and their causes.

Contents

SECTION 00—GENERAL INFORMATION

- Group 0001—Safety Information
- Group 0002—General Specifications
- Group 0003—Torque Values
- Group 0004—Fuels and Lubricants

SECTION 01—TRACKS

- Group 0130—Track System

SECTION 02—AXLES AND SUSPENSION SYSTEMS

- Group 0201—Drive Axle Housing and Support
- Group 0250—Axle Shaft, Bearings and Reduction Gears

SECTION 03—TRANSMISSION

- Group 0300—Removal and Installation
- Group 0315—Controls Linkage
- Group 0325—Input Drive Shafts And U-Joints
- Group 0360—Hydraulic System (Hydrostatic Transmission)

SECTION 04—ENGINE

- Group 0400—Removal and Installation
- Group 0416—Turbocharger
- Group 0417—Water Pump
- Group 0418—Thermostats
- Group 0421—Fuel Transfer Pump
- Group 0429—Fan Belt Tightener

SECTION 05—ENGINE AUXILIARY SYSTEM

- Group 0505—Cold Weather Starting Aids
- Group 0510—Cooling Systems
- Group 0515—Speed Controls
- Group 0520—Intake System
- Group 0530—External Exhaust System
- Group 0560—External Fuel Supply System

SECTION 07—CLUTCH (COLD WEATHER DISCONNECT)

- Group 0715—Controls Linkage
- Group 0752—Elements

SECTION 08—SPLITTER DRIVE

- Group 0851—Gears, Shafts and Bearings

SECTION 11—PARK BRAKE

- Group 1100—Removal and Installation
- Group 1111—Active Elements
- Group 1115—Controls Linkage
- Group 1160—Hydraulic System

SECTION 15—EQUIPMENT ATTACHING

- Group 1511—Drawbar
- Group 1512—Towbar

SECTION 16—ELECTRICAL SYSTEM

- Group 1671—Batteries, Support and Cables
- Group 1672—Alternator, Regulator and Charging System Wiring
- Group 1673—Lighting System
- Group 1674—Wiring Harness and Switches
- Group 1675—System Controls
- Group 1676—Instruments and Indicators
- Group 1677—Motors and Actuators

SECTION 17—FRAME, CHASSIS OR SUPPORTING STRUCTURE

- Group 1740—Frame Installation
- Group 1746—Frame Bottom Guards
- Group 1749—Chassis Weights

SECTION 18—OPERATOR'S STATION

- Group 1800—Removal and Installation
- Group 1810—Operator Enclosure
- Group 1821—Seat and Seat Belt
- Group 1830—Heating and Air Conditioning

SECTION 19—SHEET METAL AND STYLING

- Group 1910—Hood or Engine Enclosure
- Group 1921—Grille and Grille Housing

Continued on next page

All information, illustrations and specifications in this manual are based on the latest information available at the time of publication. The right is reserved to make changes at any time without notice.

TM1478-19-11MAY94

COPYRIGHT© 1994
DEERE & COMPANY
Moline, Illinois

All rights reserved
A John Deere ILLUSTRATION™ Manual
Previous Editions
Copyright 1989, 1988, 1986, 1985 Deere & Company

**SECTION 20—SAFETY, CONVENIENCE AND
MISCELLANEOUS**

- Group 2003—Fire Extinguisher
- Group 2004—Horn and Warning Devices
- Group 2006—Cigar Lighter

SECTION 31—LOADER

- Group 3102—Bucket
- Group 3115—Controls Linkage
- Group 3140—Frames
- Group 3160—Hydraulic System

SECTION 99—DEALER FABRICATED TOOLS

- Group 9900—Dealer Fabricated Tools

Index

00
01
02
03
04
05
07
08
11
15
16
17
18
19
20

Section 00 GENERAL INFORMATION

Contents

Page

Group 0001—Safety Information

Safety Signs 0001-1

Group 0002—General Specifications

655B Crawler Loader Specifications 0002-1

755B Crawler Loader Specifications 0002-3

Capacities 0002-5

Group 0003—Torque Values

Torque Valves 0003-1

Service Recommendations 0003-5

O-Ring Boss Fittings 0003-6

Flat Face O-Ring Seal Fittings 0003-7

Straight or Tapered Fittings 0003-8

Four-Bolt Flange Fittings 0003-9

Track Shoe Bolt Torque 0003-11

Master Link Track Shoe Bolt Torque 0003-12

Group 0004—Fuels and Lubricants

Use Periodic Maintenance Chart 0004-1

Fuel Specifications 0004-1

Fuel Storage 0004-1

Fuel Tank 0004-2

Engine Oil 0004-3

Hydraulic Oil 0004-4

Splitter Gearbox Oil 0004-4

Transmission Oil 0004-5

Final Drive Oil 0004-6

Roller and Idler Oil 0004-6

Grease 0004-7

Winch Oil 0004-8

Engine Coolant 0004-9

Alternative and Synthetic Lubricants 0004-9

Lubricant Storage 0004-9

HANDLE FLUIDS SAFELY—AVOID FIRES

When you work around fuel, do not smoke or work near heaters or other fire hazards.

Store flammable fluids away from fire hazards. Do not incinerate or puncture pressurized containers.

Make sure machine is clean of trash, grease, and debris.

Do not store oily rags; they can ignite and burn spontaneously.



DX,FLAME -19-04JUN90

0001
-JUN-23AUG88
TS227

PREVENT BATTERY EXPLOSIONS

Keep sparks, lighted matches, and open flame away from the top of battery. Battery gas can explode.

Never check battery charge by placing a metal object across the posts. Use a volt-meter or hydrometer.

Do not charge a frozen battery; it may explode. Warm battery to 16°C (60°F).



DX,SPARKS -19-03MAR93

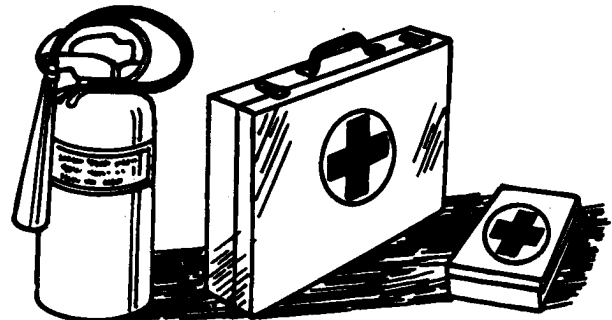
-JUN-23AUG88
TS204

PREPARE FOR EMERGENCIES

Be prepared if a fire starts.

Keep a first aid kit and fire extinguisher handy.

Keep emergency numbers for doctors, ambulance service, hospital, and fire department near your telephone.



DX,FIRE2 -19-03MAR93

-JUN-23AUG88
TS291

PREVENT ACID BURNS

Sulfuric acid in battery electrolyte is poisonous. It is strong enough to burn skin, eat holes in clothing, and cause blindness if splashed into eyes.

Avoid the hazard by:

1. Filling batteries in a well-ventilated area.
2. Wearing eye protection and rubber gloves.
3. Avoiding breathing fumes when electrolyte is added.
4. Avoiding spilling or dripping electrolyte.
5. Use proper jump start procedure.

If you spill acid on yourself:

1. Flush your skin with water.
2. Apply baking soda or lime to help neutralize the acid.
3. Flush your eyes with water for 15—30 minutes. Get medical attention immediately.

If acid is swallowed:

1. Do not induce vomiting.
2. Drink large amounts of water or milk, but do not exceed 2 L (2 quarts).
3. Get medical attention immediately.



TS203
-UN-23AUG88

DX,POISON -19-21APR93

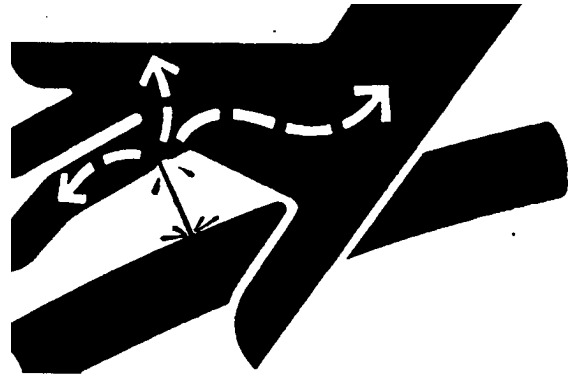
AVOID HIGH-PRESSURE FLUIDS

Escaping fluid under pressure can penetrate the skin causing serious injury.

Avoid the hazard by relieving pressure before disconnecting hydraulic or other lines. Tighten all connections before applying pressure.

Search for leaks with a piece of cardboard. Protect hands and body from high pressure fluids.

If an accident occurs, see a doctor immediately. Any fluid injected into the skin must be surgically removed within a few hours or gangrene may result. Doctors unfamiliar with this type of injury should reference a knowledgeable medical source. Such information is available from Deere & Company Medical Department in Moline, Illinois, U.S.A.



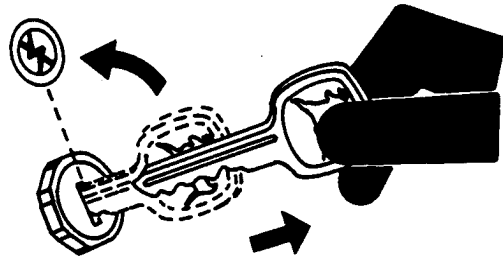
DX,FLUID -19-03MAR93

0001
3
-JUN-23AUG88
X9811

PARK MACHINE SAFELY

Before working on the machine:

- Lower all equipment to the ground.
- Stop the engine and remove the key.
- Disconnect the battery ground strap.
- Hang a "DO NOT OPERATE" tag in operator station.



DX,PARK -19-04JUN90

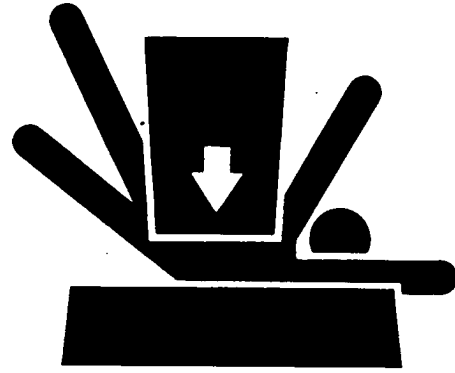
-JUN-24MAY89
TS230

0001
4

SUPPORT MACHINE PROPERLY

Always lower the attachment or implement to the ground before you work on the machine. If you must work on a lifted machine or attachment, securely support the machine or attachment.

Do not support the machine on cinder blocks, hollow tiles, or props that may crumble under continuous load. Do not work under a machine that is supported solely by a jack. Follow recommended procedures in this manual.



DX,LOWER -19-04JUN90

TS229 -JUN-23AUG88

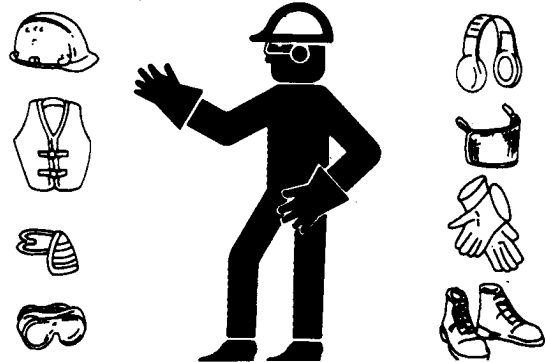
WEAR PROTECTIVE CLOTHING

Wear close fitting clothing and safety equipment appropriate to the job.

Prolonged exposure to loud noise can cause impairment or loss of hearing.

Wear a suitable hearing protective device such as earmuffs or earplugs to protect against objectionable or uncomfortable loud noises.

Operating equipment safely requires the full attention of the operator. Do not wear radio or music headphones while operating machine.



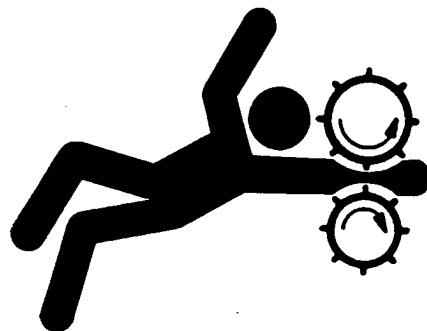
DX,WEAR -19-10SEP90

TS206 -JUN-23AUG88

SERVICE MACHINES SAFELY

Tie long hair behind your head. Do not wear a necktie, scarf, loose clothing, or necklace when you work near machine tools or moving parts. If these items were to get caught, severe injury could result.

Remove rings and other jewelry to prevent electrical shorts and entanglement in moving parts.



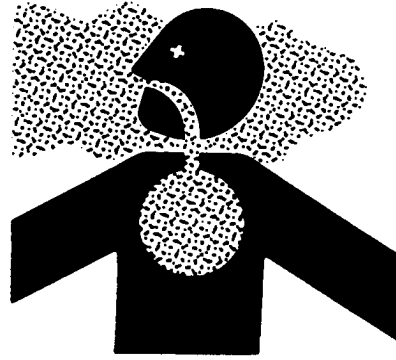
DX,LOOSE -19-04JUN90

TS228 -JUN-23AUG88

WORK IN VENTILATED AREA

Engine exhaust fumes can cause sickness or death. If it is necessary to run an engine in an enclosed area, remove the exhaust fumes from the area with an exhaust pipe extension.

If you do not have an exhaust pipe extension, open the doors and get outside air into the area.

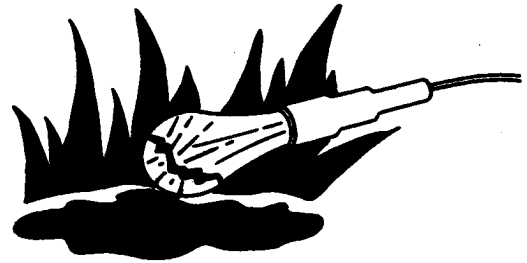


DX,AIR -19-04JUN90

TS220 -JUN-23AUG88

ILLUMINATE WORK AREA SAFELY

Illuminate your work area adequately but safely. Use a portable safety light for working inside or under the machine. Make sure the bulb is enclosed by a wire cage. The hot filament of an accidentally broken bulb can ignite spilled fuel or oil.



DX,LIGHT -19-04JUN90

TS223 -JUN-23AUG88

REPLACE SAFETY SIGNS

Replace missing or damaged safety signs. See the machine operator's manual for correct safety sign placement.



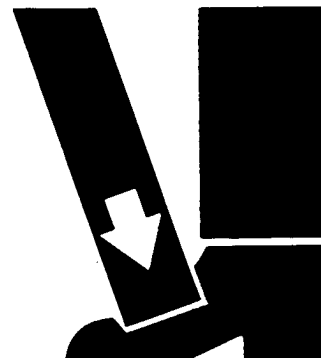
DX,SIGNS1 -19-04JUN90

TS201 -JUN-23AUG88

USE PROPER LIFTING EQUIPMENT

Lifting heavy components incorrectly can cause severe injury or machine damage.

Follow recommended procedure for removal and installation of components in the manual.



DX,LIFT -19-04JUN90

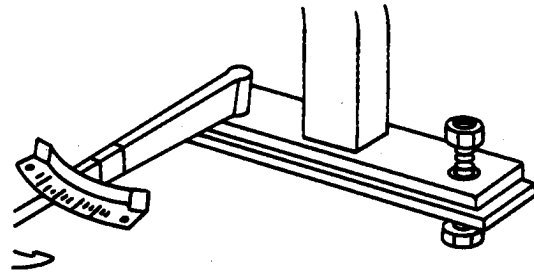
TS226 -JUN-23AUG88

0001
6

KEEP ROPS INSTALLED PROPERLY

Make certain all parts are reinstalled correctly if the roll-over protective structure (ROPS) is loosened or removed for any reason. Tighten mounting bolts to proper torque.

The protection offered by ROPS will be impaired if ROPS is subjected to structural damage, is involved in an overturn incident, or is in any way altered by welding, bending, drilling, or cutting. A damaged ROPS should be replaced, not reused.



DX,ROPS3 -19-03MAR93

TS212 -JUN-23AUG88

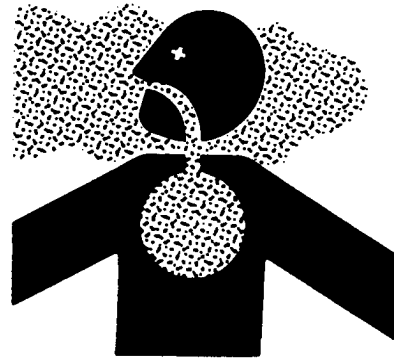
AVOID HARMFUL ASBESTOS DUST

Avoid breathing dust that may be generated when handling components containing asbestos fibers. Inhaled asbestos fibers may cause lung cancer.

Components in products that may contain asbestos fibers are brake pads, brake band and lining assemblies, clutch plates, and some gaskets. The asbestos used in these components is usually found in a resin or sealed in some way. Normal handling is not hazardous as long as airborne dust containing asbestos is not generated.

Avoid creating dust. Never use compressed air for cleaning. Avoid brushing or grinding material containing asbestos. When servicing, wear an approved respirator. A special vacuum cleaner is recommended to clean asbestos. If not available, apply a mist of oil or water on the material containing asbestos.

Keep bystanders away from the area.



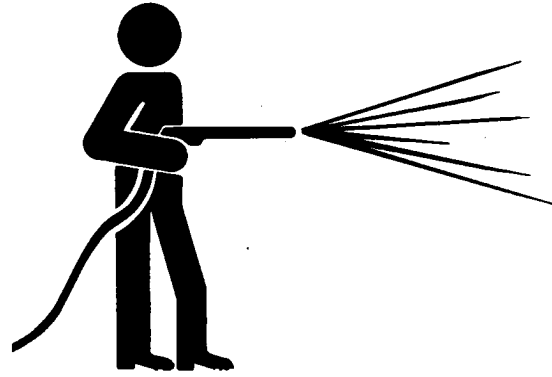
DX,DUST -19-15MAR91

TS220 -JUN-23AUG88

WORK IN CLEAN AREA

Before starting a job:

- Clean work area and machine.
- Make sure you have all necessary tools to do your job.
- Have the right parts on hand.
- Read all instructions thoroughly; do not attempt shortcuts.



DX,CLEAN -19-04JUN90

T6642EJ -JUN-18OCT88

0001
7

USE PROPER TOOLS

Use tools appropriate to the work. Makeshift tools and procedures can create safety hazards.

Use power tools only to loosen threaded parts and fasteners.

For loosening and tightening hardware, use the correct size tools. **DO NOT** use U.S. measurement tools on metric fasteners. Avoid bodily injury caused by slipping wrenches.

Use only service parts meeting John Deere specifications.



DX,REPAIR -19-04JUN90

TS779 -JUN-08NOV89

0001
8

DISPOSE OF WASTE PROPERLY

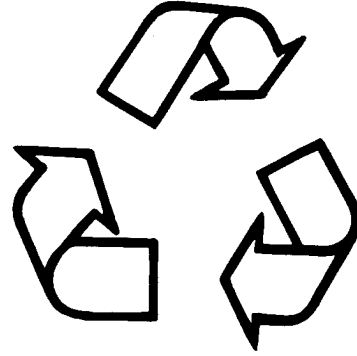
Improperly disposing of waste can threaten the environment and ecology. Potentially harmful waste used with John Deere equipment include such items as oil, fuel, coolant, brake fluid, filters, and batteries.

Use leakproof containers when draining fluids. Do not use food or beverage containers that may mislead someone into drinking from them.

Do not pour waste onto the ground, down a drain, or into any water source.

Air conditioning refrigerants escaping into the air can damage the Earth's atmosphere. Government regulations may require a certified air conditioning service center to recover and recycle used air conditioning refrigerants.

Inquire on the proper way to recycle or dispose of waste from your local environmental or recycling center, or from your John Deere dealer.



TS1133 -JUN-26NOV90

DX,DRAIN -19-03MAR93

LIVE WITH SAFETY

Before returning machine to customer, make sure machine is functioning properly, especially the safety systems. Install all guards and shields.



TS231 -19-07OCT88

DX,LIVE -19-25SEP92

REMOVE PAINT BEFORE WELDING OR HEATING

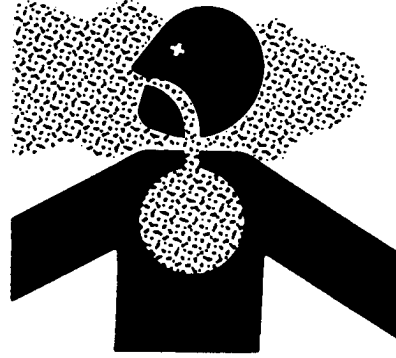
Avoid potentially toxic fumes and dust.

Hazardous fumes can be generated when paint is heated by welding, soldering, or using a torch.

Do all work outside or in a well ventilated area. Dispose of paint and solvent properly.

Remove paint before welding or heating:

- If you sand or grind paint, avoid breathing the dust. Wear an approved respirator.
- If you use solvent or paint stripper, remove stripper with soap and water before welding. Remove solvent or paint stripper containers and other flammable material from area. Allow fumes to disperse at least 15 minutes before welding or heating.



DX,PAINT -19-03MAR93

0001
9
-JUN-23AUG88
TS220

AVOID HEATING NEAR PRESSURIZED FLUID LINES

Flammable spray can be generated by heating near pressurized fluid lines, resulting in severe burns to yourself and bystanders. Do not heat by welding, soldering, or using a torch near pressurized fluid lines or other flammable materials. Pressurized lines can be accidentally cut when heat goes beyond the immediate flame area.



DX,TORCH -19-03MAR93

-JUN-15MAY90
TS953

PRACTICE SAFE MAINTENANCE

Understand service procedure before doing work. Keep area clean and dry.

Never lubricate, service, or adjust machine while it is moving. Keep hands, feet, and clothing from power-driven parts. Disengage all power and operate controls to relieve pressure. Lower equipment to the ground. Stop the engine. Remove the key. Allow machine to cool.

Securely support any machine elements that must be raised for service work.

Keep all parts in good condition and properly installed. Fix damage immediately. Replace worn or broken parts. Remove any buildup of grease, oil, or debris.

Disconnect battery ground cable (-) before making adjustments on electrical systems or welding on machine.

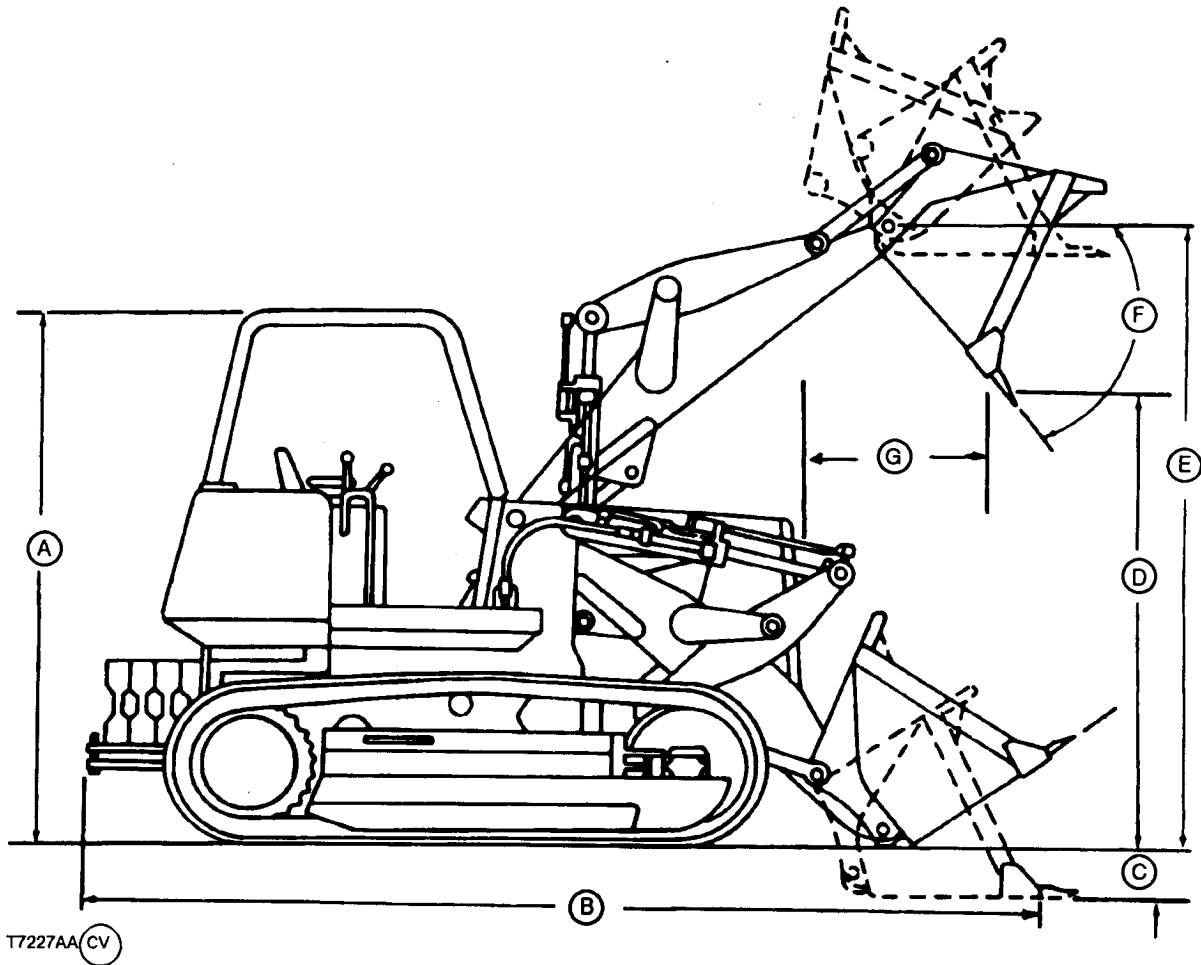


DX,SERV -19-03MAR93

TS218 -JUN-23AUG88

0001
10

655B CRAWLER LOADER



T7227AA (CV)

T7227AA -JUN-12MAR90

- A—10 ft 1.5 in. (3.09 m)
- B—18 ft 6.5 in. (5.65 m)
- C—5.5 in. (140 mm)
- D—9 ft 2.5 in. (2.81 m)
- E—11 ft 10 in. (3.60 m)
- F—45°
- G—4 ft 0.0 in. (1.22 m)

specifications are in accordance with ICED and SAE standards. Except where otherwise noted, these specifications are based on a unit equipped with 2 cu. yd. (1.53 m³) bucket with teeth, roll-over protective canopy, four counterweights, full fuel tank, 175 lb (79 kg) operator, and standard equipment.

NOTE: Specifications and design subject to change without notice. Wherever applicable

TX,115,DH971 -19-16MAR92

0002
2

655B GENERAL SPECIFICATIONS

Specifications and design are subject to change without notice. Whenever applicable, specifications are in accordance with SAE standards. Except where otherwise noted, these specifications are based on a unit with a 2 cu yd (1.5 m³) bucket with teeth, roll-over protective canopy, four counterweights, full fuel tank, 175 lb (80 kg) operator and standard equipment.

Rated Power @ 2100 rpm:

	SAE	DIN 6270B
Net	120 hp (90 kW)	90 kW
Gross	128 hp (95 kW)	

Net engine power is with standard equipment including air cleaner, exhaust system, alternator, and cooling fan, at standard conditions per SAE J1349 and DIN 6270B using No. 2-D fuel @ 35 API gravity. No derating is required up to 10 000 ft (3000 m) altitude. Gross power is without cooling fan.

Engine:

John Deere 6-cylinder turbocharged diesel 6068T

SAE net horsepower	120 hp (89 kW)
Bore and stroke	4.19 x 5 in. (106.4 x 127 mm)
Maximum net torque @ 1300 rpm	375 lb-ft (509 Nm) (51.8 kg-m)
Piston displacement	414 cu. in. (6.785 L)
Compression ratio	16.8 to 1
Lubrication	Pressure system with full flow filters
Cooling	Pressurized with thermostat and controlled bypass
Fan	Blower
Dual-stage aspirated air cleaner with restriction indicator	Dry
Electrical system	24 volt with alternator
Batteries (two 12-volt) cold cranking capacity at 0°F (-18°C)	625 amps
Reserve capacity	160 minutes each

Transmission:

Splitter drive	Pressure-lubricated helical gears drive both transmissions, main hydraulic pump, winch drive shaft and auxiliary pump drive
Drive	Dual-Path, fully automatic, infinitely variable hydrostatic transmissions
Speeds	Infinite from 0 to 6.5 mph (0 to 10.5 km/h) forward and reverse

Steering

Fully modulated, infinitely variable pedal steering for live power turns and counterrotation. No need for steering clutches or steering brakes.

Brakes:

Service	Hydrostatic
Parking	Wet-disk brakes are automatically applied when engine is stopped, or manually applied with center foot pedal during normal operation.

Hydraulic System (open center):

Pressure	2250 psi (15 514 kPa)
Filter	10 micron filter in return line with bypass
Pump	Gear, 54 gpm (204) L/min @ rated engine speed

Tracks:

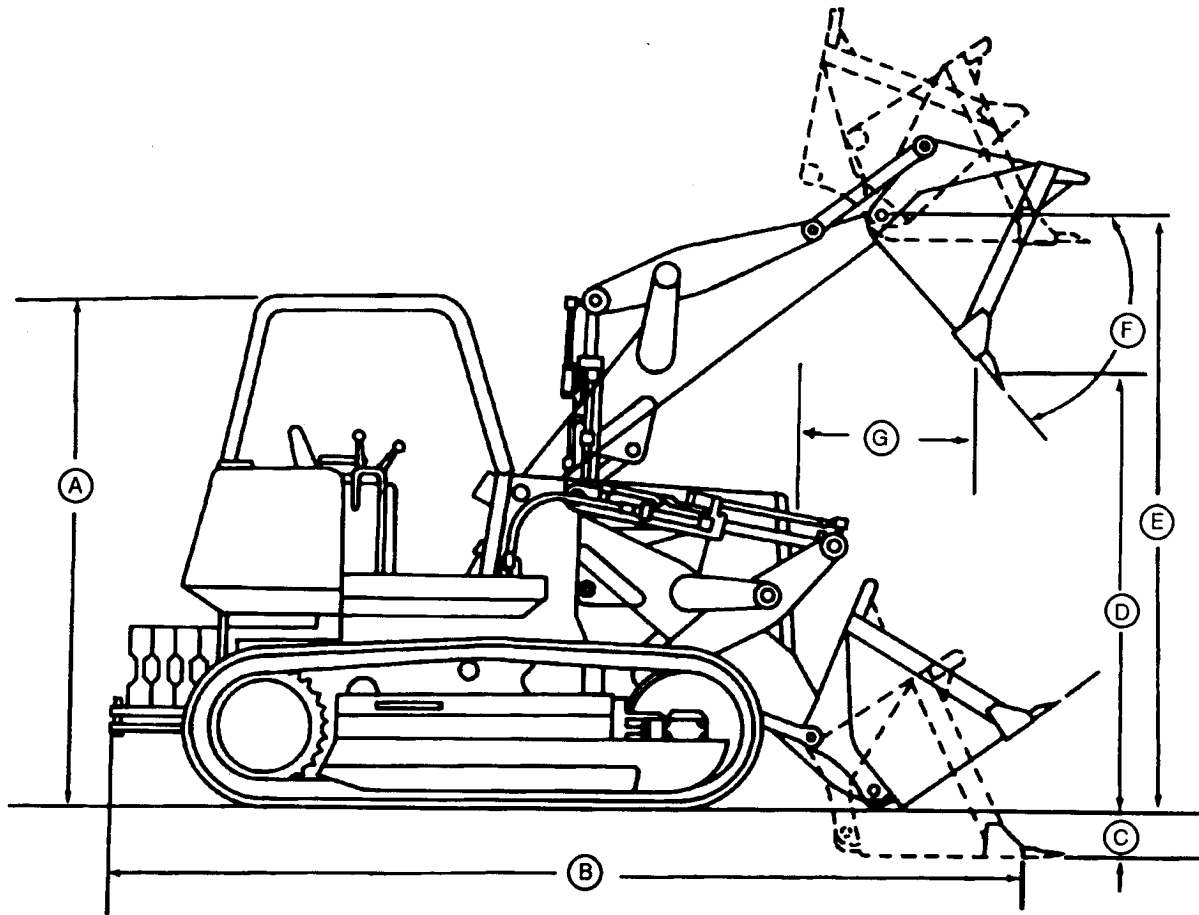
Track shoes each side	40
Shoe width	
Standard	15 in. (381 mm)
Wide track	21 in. (533 mm)
Ground contact area	
Standard	2724 sq. in. (17 575 cm ²)
Wide track	3814 sq. in. (24 600 cm ²)
Ground pressure	
Standard	11.9 psi (82 kPa) (0.8 bar)
Wide track	8.8 psi (59 kPa) (0.6 bar)
Minimum ground clearance	14 in. (356 mm)
Track gauge	
Standard	64 in. (1.63 m)
Wide track	70 in. (1.78 m)

Hydraulic Cylinders:

	Bore	Stroke
Boom	5.50 in. (140 mm)	32 in. (813 mm)
Bucket	4.50 in. (114 mm)	21.52 in. (547 mm)
Boom cylinder rods	3.75 in. (95 mm) dia.	
Bucket cylinder rods	2.25 in. (57 mm) dia.	

SAE Operating weight w/ROPS	32 400 lb (14 696 kg)
SAE Operating weight w/wide track and w/ROPS	33 600 lb. (15 240 kg)

755B CRAWLER LOADER



T7227AB(CV)

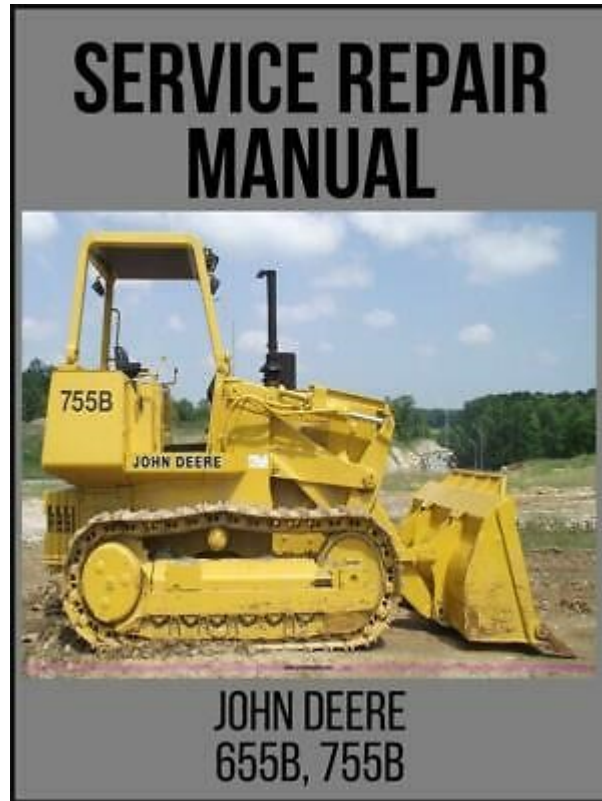
A—10 ft 3.7 in. (3.14 m)
B—18 ft 6.5 in. (5.65 m)
C—4.2 in. (107 mm)

D—9 ft 4.0 in. (2.84 m)
E—11 ft 11 in. (3.63 m)
F—45°
G—3 ft 11 in. (1.19 m)

TX,115,DH973 -19-16MAR92

T7227AB -JUN-12MAR90

0002
3



BUY NOW

**Instant Download the
Complete Manual**